

Allmand Boats is a U.S.C.G. registered boat manufacturer. Three Generations building quality boats since 1965.

1-844-843-4372

Add up your options total then email for the latest discounts and special offers on this model.

12 Passenger 760 / 20 Passenger 880 / 25 Passenger 960 Full Or Half Cabin Hard Top Small Passenger Boats

1. US\$25,600 + Engine and Rigging - 760/ 25' 12 passenger boat Includes Global Shipping.
 2. US\$29,600 + Engine and Rigging - 880/ 29' 20 passenger boat Includes Global Shipping.
 3. US\$35,600 + Engine and Rigging - 960/ 31' 25 passenger boat Includes Global Shipping.
- Length: 7.6m; 8.8m; 9.6m all same width:2.64m. High: 2.3m with a 6' inside cabin height
4. ABOVE PRICING is discount available with 120 days lead time and subject to change without notice. Higher prices may be found on other web pages.

Standard equipment:

Fiberglass seats and stern seat.

Navigation lights

S/S rails at stern,

S/S rails at TOP,

Anchor storage at bow,

Cabin (Hardtop FULL OR HALF Cabin) with windscreen and side window.

Bilge pump,

1xElectrical Wiper

1xElectrical Horn

Optional:

Outboard engine or inboard engine

Steering system mechanical for one engine: US\$200.00

Aluminum fuel tank: 200L/50g: US\$545.00

Aluminum fold windscreen door: US\$700 reduces seats by 2

18xFold seat instead of fiberglass seats: US\$2800.

Steering system: hydraulic for one engine: US\$950.

Hydraulic steering system for twin engines with connection: US\$1550

Remote control system for twin engines (Yamaha): US 1514.

Battery switch: US\$220.

Twin axle trailer with brakes price depends on made for U.S., Europe, Australia or International

Details 31' x 8'4" half or full cabin

length 31'960

width 8'4"/2.6

weight 5500 lbs

Hp 300 - 600

draft 2'/.85

fiberglass seats 20 - 30

full cabin/half cabin

fuel tank 250l - 350l

Hydraulic Steering

Optional front entry windscreen access (takes up two seats space)

Available as OB or I/O

Self bailing scuppers

120 days build time

USD85,000.00 includes twin 150 hp Yamaha 4 Stroke Engines, Rigging, Global Shipping

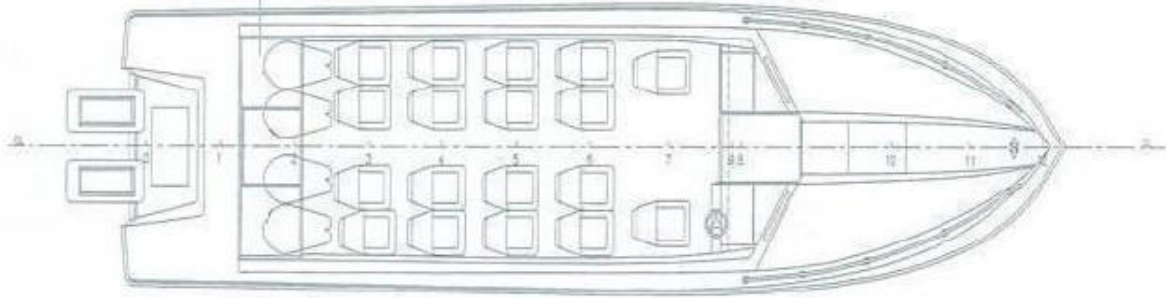
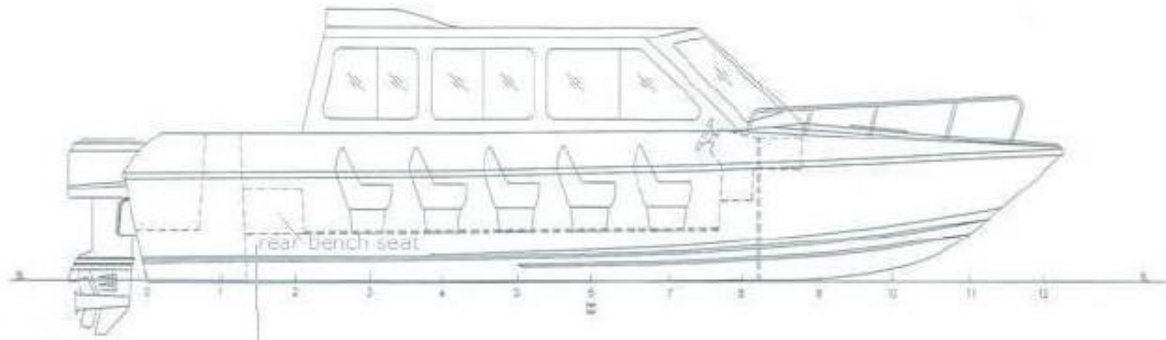












LENGTH 8.81
WATER LINE 7.893
BEAM 2.64
DRAFT 1.19

PASSENGERS 21 +
DRIVER







